

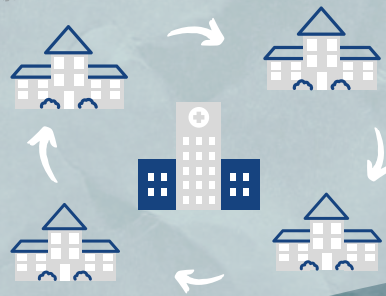
DiSH

DIABETES IN SCHOOL HEALTH

A TELEMENTORING
PROGRAM FOR SCHOOL
PERSONNEL CARING FOR
STUDENTS WITH DIABETES

*collaboration
& community*

CONNECT WITH EXPERTS



EACH SESSION FEATURES A

10 MINUTE PRESENTATION

FOLLOWED BY A

50 MINUTE DISCUSSION

*clock hour
credits*